

PRTG NETWORK MONITOR



SIMPLIFY YOUR DAY WITH PRTG

Monitor your entire IT infrastructure with PRTG Network Monitor. You have full insight into your network and its performance, to ensure that all business critical components of your IT infrastructure are running smoothly, with 100% uptime.





ONE SOLUTION FOR EVERYTHING

SMART AND EASY MONITORING

View your entire network, your systems and your applications in a single, comprehensive solution.

You'll be up and running within minutes, without frustrating, complicated configuration.

- Performance and availability
- Hardware and applications
- Virtual environments, email, web, storage, printers, etc.
- Monitor multiple locations with a single installation

- Smart setup and auto-discovery for a quick start
- Predefined sensors/checks for most common devices
- Comprehensive and user-friendly alerts and notifications
- Custom dashboards/maps for a high-level overview



“We chose PRTG over competing monitoring products as it could handle monitoring across the full estate of hardware we own. It can monitor all the applications and operating systems we have.”

Ben Tyson, Unite Group

“PRTG was easy to deploy, easy to maintain and most importantly, lovely to work with. PRTG is my favorite tool.”

Daniel Sadavoy, Jameson Bank





CUSTOMIZE YOUR MONITORING

Easily adjust PRTG Network Monitor to your individual requirements.

- Optional API and custom sensors for easy integration of custom devices and applications
- Create multi-layer custom dashboards
- Customizable web interface, reports, notifications, etc.
- Select from multiple GUIs: browser, Windows client, or free apps for iOS, Android, and Windows



“PRTG satisfied every one of our requirements. Forsyth needed custom sensors to monitor some of its more difficult devices and applications and to simplify the monitoring of complex systems.”

James Harden, Forsyth County Schools



FAIR AND SIMPLE LICENSING

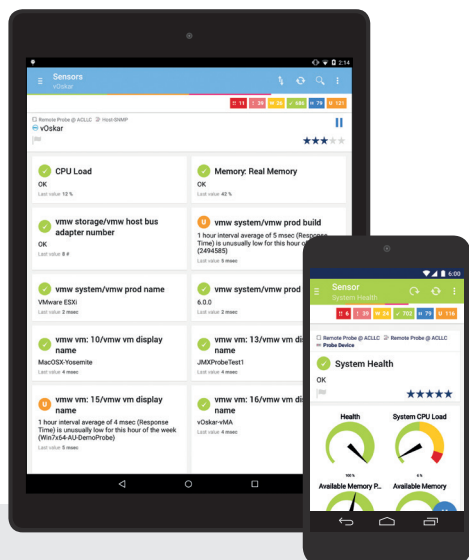
PRTG has a clear, straightforward licensing structure and its pricing is optimized for SMEs.

- No add-ons, no modules – every feature is included in each license
- Multi-location monitoring and failover cluster included
- Fair upgrade model – just pay the price difference



“I have to say I love PRTG. Shortly after we installed the evaluation software we found several issues that we had not noticed on our network before. Your product is top notch and is affordable for those on tight budgets!”

Jon Marte, Northland, A Church Distributed



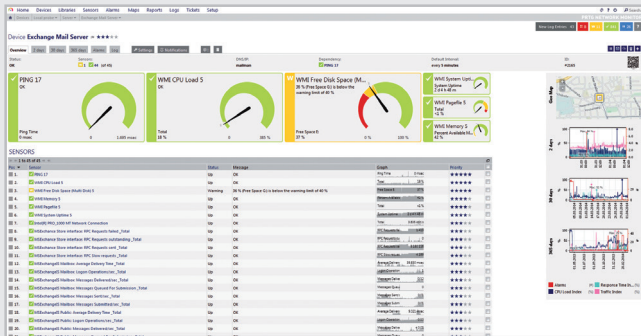
<p>500</p> <p>500 SENSORS 1 INSTALLATION</p>	<p>1000</p> <p>1,000 SENSORS 1 INSTALLATION</p>
<p>2500</p> <p>2,500 SENSORS 1 INSTALLATION</p>	<p>5000</p> <p>5,000 SENSORS 1 INSTALLATION</p>
<p>BEST VALUE</p> <p>XL1</p> <p>NOT RESTRICTED 1 INSTALLATION</p>	<p>XL5</p> <p>NOT RESTRICTED 5 INSTALLATIONS</p>

See our prices online: www.paessler.com/prices

FEATURE OVERVIEW

MONITORING THE EASY WAY

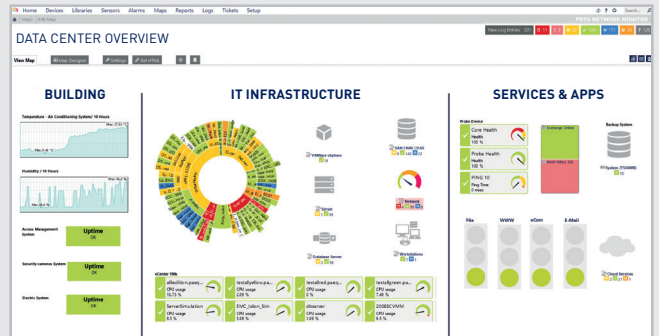
- Agentless monitoring
- Integrated database, mail server, and web server
- “Smart Setup” configuration wizard
- Auto-discovery
- Preconfigured templates for common devices and applications
- Automatic software updates
- Simple and fair licensing model including an easy upgrade path



Drill down for details

DATA PUBLICATION

- Drag & drop map editor for clear and powerful individualized dashboards
- Integrated reporting engine with delivery as HTML, PDF, or CSV
- Documented API for custom data export
- Free apps for iOS, Android, and Windows Phone
- Powerful Ajax web interface
- Windows client for viewing multiple PRTG installations in one dashboard



Your data center at a glance

FLEXIBLE AND RELIABLE ALERTS

- Alerts for individually configured criteria
- Various notification methods (email, SMS, push notifications, HTTP request, exe, script, syslog, etc.)
- Scheduled and customizable reports (HTML, PDF)
- Detailed log files about all activities and results
- Internal ticket system

MONITORING OF “EVERYTHING” WITH A SINGLE SOLUTION

- Support for all common protocols (SNMP, WMI, ICMP, HTTP, SOAP, SSH, FTP, SMTP, POP3...)
- Support for NetFlow v5/v9, sFlow, jFlow, IPFIX, and packet sniffing
- Monitoring of hardware, software, virtual environments and applications
- Out-of-the-box support for leading IT vendors (Cisco, VMware, Microsoft, HPE, Oracle, Juniper, HP, Amazon CloudWatch, Dell, APC, NetApp...)
- Agentless monitoring for Windows, Linux, and MacOS
- RESTful API and custom sensors for monitoring non-standard devices and applications
- Event log monitoring
- Monitoring of multiple sites with one installation/license
- Suitable for all industry verticals

SOFTWARE ARCHITECTURE

- Failover cluster functionality included
- Integrated database optimized for monitoring data (no SQL server required)
- Historic monitoring data stored in original intervals (raw data, not summarized)
- Designed for small and medium sized networks

LICENSING AND SYSTEM REQUIREMENTS

- Get started with 100 free sensors
- All features included in every license, no add-ons, no modules
- Easy upgrade to higher licenses by only paying the price difference
- Level 1, 2 and 3 support in-house by network engineers and developers
- Runs on Windows Server 2008R2/2012R2/2016 and Windows 7/8.1/10
- Runs on current version of common browser for the web interface
- Runs in AWS and Microsoft Azure

All rights for trademarks and names are property of their respective owners. 700439/EN/20170110

YOUR LOCAL CONTACT:

Komil Shamgunov
Winncom Technologies
28900 Fountain Parkway Unit B
Solon, OH 44139
888-946-6266
www.winncom.com

GET YOUR FREE TRIAL!
<https://shop.paessler.com/trial/prtg/115e6611>

